

# Cemix®

## construction chemicals

*“Unconditional Quality”*  
*“Unconditional Quality”*



[www.cemix.com.tr](http://www.cemix.com.tr)



# Cemix®

## construction chemicals

### ARSLAN CONSTRUCTION CHEMICALS

#### Our vision;

The main goal of our company is primarily "customer satisfaction". By providing satisfaction of the consumers, by growing continuously by developing on the market and always presenting the highest quality of the consumer with reasonable cost, it is beneficial to the investor in the long term in case of consumption. Another goal is to become a national company domestically and to reach a structure that will expand our product range and represent our country in foreign markets.

#### Our mission;

It is to be a company that works with the principle of "service first" in the awareness of its duty responsibilities, to provide quality and gentle service to its customers, to be conscious of environmental awareness which is integrated with its customers and employees, and to be conscious of nature and humanity.

#### Our quality policy;

The quality policy supporting the mission of ARSLAN CONSTRUCTION CHEMICALS;

As employees of all ARSLAN CONSTRUCTION CHEMICALS; Products and services that meet the needs and expectations of every and every one of our customers, at the highest possible level, until the end user;

- With less waste,
- At a lower cost,
- As soon as possible,
- With a robust and constantly improving quality system,
- In a clean, organized and reliable working environment,
- To perform with diligent staff who have institutional cultures and services based on mutual love, respect, continuous improvement and education bases and
- The confidence we provide with understanding of modern business can be maintained with an ever increasing course.



# Surface Hardeners

## QUARZTOP 100 QUARTZ BASED SURFACE HARDENER

### DESCRIPTION

QUARZTOP 100 surface hardeners are premixed ready to use product based on selection of hard aggregates, high quality cement and dispersive admixtures and inorganic pigments.

QUARZTOP 100 surface hardeners can be supplied in various colors; grey, red, green, yellow and inorganic pigments used are resistant to cement alkalis and light.

### APPLICATION AREA

QUARZTOP 100 surface hardeners could be applied on; industrial floors designed light traffic factory floors, car service, car parks, supermarkets, hospitals, ramps, sport facilities, petroleum stations flooring surfaces realized in concrete.



### PACKING AND STORAGE

QUARZTOP 100 surface hardener is packed in bags of 30 kg. If stored in covered in dry premises on pallets, has a shelf life of almost 6 months.

### DOSAGE

QUARZTOP 100 surface hardeners can be applied 3-8 kg/m<sup>2</sup>, in function of wear resistance of flooring.

### APPLICATION

QUARZTOP 100 surface hardeners are product to be applied on shaking basis better in two successive hands. The first hand shake 2/3 of the total quantity on the fresh walking concrete. After the above mentioned trowelling, apply the remaining 1/3 of the product and repeat the troweling operation until desired finished the realized.

### CURING

CEMIX CURING can be applied after surface is hardened and before the execution of the joint cut. The Cemix Curing maintains the humidity in the concrete during the first phase of curing, helping to obtain major mechanical resistance.

# Stamp Beton Systems

## DECOBETON SURFACE HARDENER FOR STAMP

### DESCRIPTION

DECOBETON, stamped surface hardener is a mixture of hydraulic binder, mineral based hard aggregates, pigments and other additives applied on fresh concrete, a ready-mixed concrete surface hardener which increases the wear and dust resistance and impact resistance of the surface.

It is produced in gray, red, green, yellow and other colors when requested. Colored DECOBETON surface hardener uses alkaline and light resistant pigments.

### APPLICATION AREA

In stamping concrete applications; On pedestrian roads, on sidewalks, in park and garden concretes, in environmental regulations.

### FEATURES

- Allows mold patterns to pass completely to the fresh concrete surface.
- Prepared in the desired colors.
- Provides an antique look to the surface with the powder form spreader.
- Specially designed aggregates ensure long life of the molds.



### PACKING AND STORAGE

DECOBETON is packed in 25 kg polyethylene bags. Shelf life is 6 months when stored in protected and dry places.

### CONSUMPTION

DECOBETON consumption is 3-6 kg / m<sup>2</sup>.

### APPLICATION

Concrete is poured into the prepared and molds at the desired code height and the mold is placed by placing the concrete. When reaching the concrete surface, 2/3 of the total amount of DECOBETON to be applied (in the form of only footprints when pressed) is discarded and the remaining 1/3 material is discarded after the dismantling process. At the end of the troweling process, CEMRELEASE PRA is sprinkled on the surface and the stamping process is done on the concrete surface. At the end of 1-2 days CEMRELEASE PRA is removed from the surface with pressurized water.

Concrete must be protected with CEMCURE AC or CEMCURE SH immediately after application. In this way, the concrete is prevented from evaporating rapidly and the concrete can be set up with its own water. Prevents the formation of capillary shrinkage cracks, it prevents absorption of concrete.

## CEMRELEASE PRA MOLD RELEASE AGENT

### DESCRIPTION

CEMRELEASE PRA is a mold release agent made up of pigments and other additives applied on the concrete surface hardener and used to prevent the concrete from adhering to the mold.

It is gray color; It gives an aged appearance on the applied surfaces.

### APPLICATION AREA

In order to prevent sticking of mold to fresh concrete in stamp concrete applications; On pedestrian roads, on sidewalks, in park and garden concretes, in environmental regulations.

### FEATURES

- There is no mold adhesion of fresh concrete in stamp concrete applications.
- Allows mold patterns to pass completely to the fresh concrete surface.
- Gray color gives the surface an antique look.
- Allows molds to last longer.



### PACKING AND STORAGE

CEMRELEASE PRA is packed in 10 kg of polyethylene backed kraft bags. Shelf life is 6 months when stored in protected and dry places.

### CONSUMPTION

CEMRELEASE PRA consumption is 200-400 gr / m<sup>2</sup>.

### APPLICATION

Concrete is poured into the prepared and molds at the desired code height and the mold is placed by placing the concrete. When it becomes possible to reach onto the concrete (with only footprint when pressed), 2/3 of the total amount of material to be applied is discarded and the remaining 1/3 material is discarded after the dismantling process. At the end of the trowel operation, CEMRELEASE PRA is applied to the concrete surface by stamping. After 1-2 days CEMRELEASE PRA is removed from the surface with pressurized water.

Concrete must be protected with CEMCURE AC or CEMCURE SH immediately after application. In this way, the concrete is prevented from evaporating rapidly and the concrete can be set up with its own water. Prevents the formation of capillary shrinkage cracks, it prevents absorption of concrete.



# Concrete Surface Protectives

## CEMCURE AC ACRYLIC BASED CONCRETE PROTECTIVE

### DESCRIPTION

CEMCURE AC is a water-based acrylic resin based concrete preservative liquid. Provides moisture control by reducing surface porosity and capillary cavities to prevent water exchange on the concrete surface. It is applied by roller, brush or spraying methods to prevent the sudden evaporation of water required for hydration of concrete immediately after all new spilled concrete surfaces and concrete surface hardener applications. Improving the performance of the old concrete surface can be used to reduce the dust. Provides short-term resistance to light chemicals and alkalis on the concrete surface.

### APPLICATION AREA

CEMCURE AC should be used after all floor concrete and concrete surface hardener applications.

### SPECIAL FEATURES

- CEMCURE AC increases the strength of concrete.
- Concrete removes the need for water.
- Prevents the formation of burning and capillary cracks which can occur during the setting of concrete.
- Used in all indoor and outdoor areas. Then the acrylic based applications to be made on it will serve as primer.
- Reduce the amount of dust on the concrete surface.
- Allows easy cleaning of the surface.



### PACKING AND STORAGE

CEMCURE AC is in 30 lt can. A cool, sheltered place in the original bid. It can be stored for 6 months.

### CONSUMPTION

CEMCURE AC consumption depends on the condition of the concrete surface and the application method. The amount to be applied to a normal concrete surface; Brush can be applied in roll applications in the range of 0.060 - 0.120 lt / m<sup>2</sup>  
In spray applications 0.100 - 0.150 lt / m<sup>2</sup>

### APPLICATION

CEMCURE AC should be done after final finishing on the concrete surface, when the surface of the concrete is treated to the hardness that will not damage the surface. In other words, the brightness of new spilled concrete surface disappears and application should be done. Care should be taken not to pool the material during application. Otherwise, images in the form of white spots can be observed. After CEMCURE AC application, the drying time of the material is 1 - 2 hours at 20 ° C. Drying is completed within 24 hours. After this process the concrete surface is not affected even by the rain water.

### TECHNICAL DATA

Material structure: Acrylic resin  
After application: Transparent, transparent  
Density: 1 kg / liter  
Flash point: None  
Drying time: 1-2 hours  
Appearance: White liquid

## CEMCURE SH SYNTHETIC RESIN BASED CONCRETE PROTECTIVE

### DESCRIPTION

CEMCURE SH is a concrete protective and curing agent, applied to newly laid concrete surfaces to prevent moisture loss and to help ensure that the desired strength of the concrete is reached. CEMCURE SH can be applied also by brush or sponge. CEMCURE SH applied to the concrete surface forms a uniform waterproof film which prevents early evaporation of the concrete water. CEMCURE SH is slowly disappear leaving the surface clean.

### APPLICATION AREA

CEMCURE SH can be used for the protection all concrete surface as concrete curing agent.

### ADVANTAGES

- Gives controlled concrete curing.
- No need for costly equipment for water supply
- Allows slow moisture evaporation.
- Quick and easy to use.
- Long lasting protection.

### PACKAGING

CEMCURE SH is packed in 30 litre and 200 litre drums.



### DOSAGE

Six square metres per litre depending on the condition of the surface and the method of application. Ensure complete and even coverage in one application.

### APPLICATION

CEMCURE SH is supplied ready for use, direct from the container, may be applied with a soft broom or low pressure spray equipment. Application may begin as soon as the surface will receive it without marking or pitting the surface. Spraying will allow earlier application.

CEMCURE SH is a resin emulsion which forms a membrane film when applied to the surface of the newly laid concrete. This membrane prevents the rapid evaporation of moisture from the concrete and aids the development of concrete strength. CEMCURE SH contains a dye, which fades with time, to indicate areas treated.

CEMCURE SH may be used on all types of concrete structures, particularly where other means of wet curing are difficult to carry out, such as vertical or sloping faces. Surfaces to which CEMCURE SH has been applied may be cement rendered, painted with a variety of coatings including resin emulsion, oil based and plastic types. Weathered film must be removed prior to treatment.

For 100% removal of CEMCURE SH, a light acid etching may be used.

# Primers

## PRIMER AC HYDROPHOBIC IMPREGNATION FLUID

### DESCRIPTION

PRIMER AC is an adhesion promoting hydrophobic impregnating liquid which reduces the pores on the surface of concrete and screed surfaces to be leveled, as a pre-treatment. PRIMER AC must be applied absolutely in order to prevent the surfaces from being influenced by moisture in leveling applications and to prevent the formation of cracks due to rapid water absorption at the same time.

### APPLICATION AREA

- Indoors,
  - In applications of screed,
  - In ceramic adhesive applications
  - To reduce the absorption of surfaces on walls and upholstery,
  - In gypsum plaster applications,
- It should be used as a hydrophobic impregnating liquid to prevent the formation of cracks caused by rapid water absorption and to increase adherence.



### SPECIAL FEATURES

- It can be easily applied in closed areas because it is odorless and water based.
- Self leveling prevents cracks from shrinkage in applications.
- Self leveling prevents formation of air bubbles during application of leveling screed.
- Apply by brush, roller or spray.
- Easy to apply and economical.

### CONSUMPTION AND APPLICATION

PRIMER AC hydrophobic impregnated liquid is 0,100 kg / m<sup>2</sup>. Preparation of the surface;

Prior to application of PRIMER AC, the application surface should be free from adherence reducing substances such as dust, dirt and oil. The playing parts on the surface should be cleaned.

Application,

PRIMER AC is used by brushing, rolling or spraying 0,100 kg of material in 1 m<sup>2</sup> area on the surface. At application time and after application air temperature should be at least +50. Leveling screed can be applied approximately 2 hours after application.

### PACKING AND STORAGE

PRIMER AC is in 10 L and 30 L plastic bottle. Shelf life is approximately 12 months in a cool environment.

## PRIMER BB

### PRIMER FOR PLASTER

#### DESCRIPTION

PRIMER BB is an acrylic resin based, colored, plaster primer material used to increase adherence and to form an adhesion surface prior to plastering of gross concrete surfaces.

#### APPLICATION AREA

- Indoors and outdoors,
  - In horizontal and vertical applications,
  - In ceramic adhesive applications,
  - To reduce the absorption of surfaces on walls and upholstery,
  - For gypsum and cement based plaster applications,
- Should be used as a primer to prevent the formation of cracks due to rapid water absorption and to increase the adherence.



#### SPECIAL FEATURES

- It can be easily applied in closed areas because it is odorless and water based.
- Creates a tight grip surface on smooth and smooth surfaces.
- Apply brush, roller.
- Color can be prepared.

#### CONSUMPTION AND APPLICATION

PRIMER BB lining is 0,150-0,200 kg / m<sup>2</sup>.

Preparation of the surface;

Prior to application of PRIMER BB, the application surface must be free from adherence reducing substances such as dust, dirt and oil. The playing parts on the surface should be cleaned.

Application,

PRIMER BB is used with a brush or roll of water-thinned material, with a surface area of 1 m<sup>2</sup> and 0,150 kg of material. At application time and after application air temperature should be at least +50.

Cement based or plaster based plaster application can be done approximately 24 hours after application.

#### PACKING AND STORAGE

PRIMER BB is in 15 kg plastic buckets.

Shelf life is about 6 months in a cool environment.

## Waterproofing Systems

## CEMFLEX 1K

### CEMENT BASED WATERPROFING SYSTEM

#### DESCRIPTION

CEMFLEX 1K is a single-component waterproofing material used for waterproofing concrete and briquette constructions. Modified powder component with high water repellency is made of hydraulic binder, additives and fillers. It is made in white.

#### APPLICATION AREA

- Water tanks, pools, water treatment plants
- The base, inside and outside walls of the basements
- Can be used on wet terraces such as bathrooms, kitchens and toilets on the terrace and balconies.

#### SPECIAL FEATURES

- CEMFLEX 1K forms a very high coating of water resistance in the applied construction.
- Increases the resistance of the applied structure to external factors.
- Apply by brush, roller or spatula.
- It can be walked on after dry.
- Applied material is resistant to ultra violet rays.
- Easy to apply and economical.



#### CONSUMPTION AND APPLICATION

1 kg material forms 1 mm thick coating on 1 m<sup>2</sup>. It is recommended that the application be made in two layers.

Preparation of the surface; Before application of CEMFLEX 1K the application surface should be free of adherence reducing substances such as dust, dirt and oil and should be slightly rough. The play pieces on the surface should be repaired with cleaned pits. Fish corners should be chamfered to corners. The surface to be applied should not be high, the absorbent surface must be moistened before application and the application should be done when the surface is slightly moist.

Mixing,

CEMFLEX 1K is a single component.

It is recommended to use a drill and mixer tip to ensure a homogenous mix. First, water is added to a cuvette, then the powder component is gradually added and stirring is continued until a homogeneous mixture is obtained. A small amount of water may be added to the mixture to obtain a good blend for application. The completely mixed material is left for 5 minutes and then mixed again and started to be applied.

ELASTOBOND must be added to increase the elasticity and cohesion.

ELASTOBOND is a second component of CEMFLEX 2K.

Application,

CEMFLEX 1K should be made in two layers by using a nylon brush, roller or spatula so that 1 kg of material on the slightly damp concrete surface will be 2 mm thick in the future. Where the pond condition is observed and where the water pressure is high, two coats should be applied. The second layer should be applied after drying the first layer for the next day. At application time and after application air temperature should be at least +5. In extremely hot and windy weather, the surface must be protected with a cover. It takes 7 days for the material to acquire all the properties after application.

#### PACKING AND STORAGE

CEMFLEX 1K, resistant to moisture 25 kg. It is in the bag. Shelf life is 6 months when stored in protected and dry places.

## CEMFLEX 2K

### TWO COMPONENT WATERPROFING SYSTEM

#### DESCRIPTION

CEMFLEX 2K is a in two component waterproofing material used for waterproofing concrete and briquette constructions. The liquid component is a modified liquid acrylic resin emulsion with high water repellency and the powder component is composed of hydraulic binder, additives and fillers.

#### USAGE PLACES

- Water tanks, pools, water treatment plants
- Filling cracks and insulating joints in large concrete areas
- The base, inside and outside walls of the basements
- Can be used on wet terraces such as bathrooms, kitchens and toilets on the terrace and balconies.

#### SPECIAL FEATURES

- CEMFLEX 2K creates a very high coating of water resistance in the applied construction.
- Increases the resistance of the applied structure to external factors.
- Impermeable coating does not affect the breathing of the surface.
- Resistant to positive water pressure on inner and outer facades.
- Apply by brush, roller or spatula.
- It can be walked on after dry.
- Easy to apply and economical.



#### CONSUMPTION AND APPLICATION

1 kg of material is used in 1 m<sup>2</sup> on the beef floor. It is recommended that the application be made in at least two layers.

Preparation of the surface; Before application of CEMFLEX 2K, the application surface should be free of adherence reducing substances such as dust, dirt and oil and should be slightly rough. The play pieces on the surface should be repaired with cleaned pits. Angles should be chamfered. The surface to be applied should not be high temperature, the absorbent surface must be moistened before application and the application should be done when the surface is slightly moist.

Mixing, CEMFLEX 2K is two components. (Liquid and powder)

It is recommended to use a drill and mixer tip to ensure a homogenous mix. First, a liquid component is added to a cuvette, then the powder component is gradually added, and stirring is continued until a homogeneous mixture is obtained. A small amount of water may be added to the mixture to obtain a good blend for application. The completely mixed material is left for 5 minutes and then mixed again and started to be applied.

Application, CEMFLEX 2K should be made in two layers by using nylon brush, roller or spatula so that 1.5 kg of material will be 2 mm thick on the surface of 1 m<sup>2</sup> on slightly damp concrete surface. Where the pond condition is observed and where the water pressure is high, two coats should be applied. The second layer should be applied after drying the first layer for the next day. At application time and after application air temperature should be at least +5. In extremely hot and windy weather, the surface must be protected with a cover. It takes 7 days for the material to acquire all the properties after application.

#### PACKING AND STORAGE

CEMFLEX 2K, resistant to moisture 25 kg. In bags + 10 L cans. Shelf life is minimum 6 months when stored in protected and dry places.



# CRYSTACEM

## OSMOTIC CEMENT BASED WATERPROOF COATING FOR NEGATIVE PRESSURE

### DESCRIPTION

CRYSTACEM is a cement based waterproofing product that provides permanent, non-penetrating, waterproofing of concrete and briquette structures by integrating with old and new cement based surfaces. The chemistries of CRYSTACEM, in old or new concrete constructions, prevent the passage of water with the aid of insoluble crystals which form reactionary capillary cracks and capillary spaces and provide definite water insulation as a permanent part of the structure.

### APPLICATION AREA

Water tanks, swimming pools, tile and ceramic under wet areas, underground car parks and floor car parks, retaining walls, interior walls of basement walls, water treatment plants, grain silos, dams, channels, ports, rungs, sewer pipes, concrete pipes, construction Joints, roofs and all concrete and briquette structures can be easily applied in horizontal and vertical applications.

### SPECIAL FEATURES

- CRYSTACEM, the water-borne capillary cracks and capillaries in the voids effectively prevent the progress of the water by the formation of crystals and provide the building with waterproofing for life.
- Provides an effective insulating coating against both positive and negative water pressures on internal and external surfaces
- Protects concrete and equipment from various chemicals, prevents corrosion.
- Because it is a part of concrete construction, it is not torn, punctured or old.
- Not toxic, used in drinking water tanks.



### CONSUMPTION

1 Kg / m<sup>2</sup>, beakers.

### APPLICATION

The surface to be treated with CRYSTACEM must be free of dust, oil, dyestuff, curing agent and other penetration inhibiting substances from clean, solid free particles. Damaged surfaces should be repaired with CRYSTACEM plaster. Surfaces must be saturated with water so as not to form water deposits before application. Since the penetration of water on the application surface directly affects the depth of crystallization of the CRYSTACEM material, the structure must be watered several times to saturate the water. CRYSTACEM is prepared in a deep container in accordance with the following characteristics.

### CRYSTAFIX AQUEOUS MORTAR

1 part of water and 2.25-2.5 parts of powder are homogeneously mixed with the mixer in the water placed in a container.

### CRYSTAFIX PLASTER

Mix 1 part of CRYSTACEM with 2 parts of sand and add water until trowel consistency is achieved.

The CRYSTACEM sherry is applied twice to the wetted concrete surface with a brush or spray. The second layer is applied perpendicular to the previous one, before the first layer is sufficiently hardened but before the water is lost. On the surfaces such as broken concrete, brick, briquette, thin plaster is made instead of the second layer. During use, the product should be handled with care and avoid contact with eyes, mouth, skin and food.

### CURING

Fast drying of the CRYSTACEM coating should be avoided. After application, the surface should be wetted with water for 1 week to accelerate crystallization and penetration. Water reservoirs can be filled 24 hours after application. Soil filling can be done after curing with water for 7 days after application.

### PACKING AND STORAGE

CRYSTACEM moisture resistant 25 kg. It is in the bag. It can be stored for 6 months in dry and sheltered environments.

# ELASTOCEM

## ONE COMPONENT WATERPROOFING SYSTEM

### DESCRIPTION

ELASTOCEM is a single component, elastomeric resin based waterproofing coating. ELASTOCEM used as an elastic waterproofing coating on cementitious substrates, pitched roofs, terrace and balconies etc.

### APPLICATION AREAS

- on all cement based surface as a waterproofing coating
- exterior surfaces of buildings , vertical and horizontal applications
- on surface of ground walls , as a waterproofing coating,
- on surface of previously made waterproofing coating,
- can be used in wet area such as toilets, terrace and balconies, bathroom ,kitchen etc.

### SPECIAL FEATURES

- ELASTOCEM coating creates a very high water resistance.
- increases the durability of the structure for against external factors.
- ELASTOCEM can applied with brush, roller or spatula
- can be walked on after drying
- easy to use and affordable.



### COERAGE AND APPLICATION

ELASTOCEM can be applied 2 or 3 times on surface needs 0,500 to 0,750 kg/m<sup>2</sup>, as depends on surface properties.

Preparation of the surface ;

The application surface must be clean before application of ELASTOCEM and surface should be slightly rough. If there is pits , should be repaired with repair mortar. Corners shoul be bevel. The surface temperature should not be higher and primed with Primer AC for adhesion of ELASTOCEM. mixing.

ELASTOCEM is a single component material. Before application must be mixed using drill and mixer in the package. ELASTOCEM can applied with brush, roller or spatula on surface , cleaned and prepared. Pour 40-50 percent of water should put in package for diluted material as primer layer. After drying primer layer, should be applied second layer need 20-25 percent diluted with water: if need third layer can be applied on surface.

### PACKAGING AND STORAGE

ELASTOCEM , packed in 15 kg plastic pails .

Self life is minimum 6 months if protected and dry place.

## Repair Mortars

# REPAIR MORTAR

## CEMENT BASED REPAIR MORTAR

### DESCRIPTION

REPAIR MORTAR is a ready-to-use non-structural repair mortar which is used in repairing and plastering of cement based, polymer reinforced concrete, gross concrete, brick, brick and prefabricated concrete elements.

### APPLICATION AREA

- All concrete surfaces are repaired and plastered,
- If plastering is not considered on prefabricated, precast and gross concrete surfaces, aesthetic repair of broken edges and corners
- In the repair of damaged surfaces and corner chamfers in concrete and briquette structures to be insulated,
- Prior to laying of tiles and ceramic tiles, horizontal and vertical surface smoothness,
- It is used on inner and outer facades to create a hard smooth surface suitable for paint and wallpaper application.

### FEATURES

- REPAIR MORTAR is ready to use powder mixture.
- REPAIR MORTAR is easily processed and smooth surface is obtained with finishing.
- It is mixed with water only.
- Used in all horizontal and vertical applications.



### PACKING AND STORAGE

REPAIR MORTAR is packed in 25 kg polyethylene backed kraft bags with automatic filling. It is stored in sheltered and dry places for 6 months.

### APPLICATION

Before applying REPAIR MORTAR, the surface of the application must be covered with all kind of dust, It should be free from loose parts which will prevent adhesion. The surface to be applied should be slightly damp, if the surface is flat enough to prevent sticking, the surface should be roughened. Prior to application of REPAIR MORTAR, priming with surface PRIMER AC increases adherence.

Depending on the intended use of the material, 25 kg of REPAIR MORTAR should be slowly added to the container filled with approximately 6 lt of water to obtain a proper mix, so that the mixture can be homogeneously mixed with the trowel or mixer. After 5 minutes rest, the mixture is mixed again. REPAIR MORTAR is applied with trowel and spatula. After waiting for a while, solidify the surface thoroughly with wooden or plastic spatula.

Dosage: 25 kg REPAIR MORTAR with 6 kg water, 6 kg water for repair and 25 kg REPAIR MORTAR for thin coating are mixed accordingly.

### CONSUMPTION

REPAIR MORTAR is about 1.8 kg / m<sup>2</sup> for 1 mm coating thickness.

# Ready Plasters

## CEMPLASTER READY PLASTER

### DESCRIPTION

CEMPLASTER is a cement based, ready-mixed plaster mixture which can be applied by hand and machine. It is a ready-mix mixture based on polymer modified cement which is used for repairing all types of concrete, gross concrete, briquette, brick and prefabricated concrete components and for coating surfaces. It is easy to prepare and does not shrink. The structure has hydraulic binder adhesion promoting and resilience polymer additives and classified fillers. It is gray color but it is also produced in other colors when requested.

### APPLICATION AREAS

CEMPLASTER; It should be used in the plastering of surfaces of gasbeton, brick, briquette and all other building elements on the interior and exterior sides.

### FEATURES

- CEMPLASTER is ready to use powder mixture, easy to prepare and process. Adhesion power is perfect.
- It is used for plastering of all brick and beton surfaces.
- Provides high adherence and flexibility.
- Used for all interior and exterior applications.
- Ensures that the system is long-lasting and durable. It is resistant to water and frost.



### PACKING AND STORAGE

CEMPLASTER is packed in 25 kg polyethylene-backed kraft bags. It is stored in sheltered and dry places for at least 6 months.

### APPLICATION

Surface preparation;

Prior to the application of CEMPLASTER, the surface of the application should be made of loose pieces. It should be free. The application surface should be slightly moistened.

Preparation of mixture;

25 kg of CEMPLASTER in 5 - 6 liters of water is added homogeneously with a trowel or mixer

Should be mixed. After 5 minutes rest, the mixture is mixed again. The agglomerated material

Care should be exercised.

Application;

Before application, the surface should be free from dirt, grease, etc. that prevent any dust and adhesion.

CEMPLASTER is applied to the surface as gypsum plaster with steel trowel. The surface of the plaster is lightly moistened for a bright and smooth surface. Wipe with a damp sponge for a slightly rough surface.

### CONSUMPTION

The condition of the CEMPLASTER consumable surface depends on the application tools.

## DECOPLASTER DECORATIVE PLASTER

### DESCRIPTION

DECOPLASTER is a high strength, polymer modified cement based mortar for plastering of all types of surfaces. Color can be made on request.

There are two models of different aggregate design and application method.

- DECOPLASTER LINE - Decorative plaster with line texture

- DECOPLASTER GRAIN - Decorative plaster with grain texture

### APPLICATION AREA

It is used in plastering of all kinds of briquette gas concrete or rough plaster surfaces in buildings.

### FEATURES

- It is easy to prepare and use.
- Can be used in interior and exterior.
- Elastic, does not crack or sag.
- Provides good adhesion.
- The work period is long.

### CONSUMPTION

The average consumption for DECOPLASTER is 3-4 kg / m<sup>2</sup>.



### APPLICATION

Surface preparation

Care must be taken that the plates to be plastered are firm and well seated. It can be primed with PRIMER BB to increase surface adhesion before plaster application. The primer layer forms a water impermeable structure between the plaster and the adhesion surface. The surface should be smooth and solid. The surface should be moistened before application.

Mixing

25 kg. Powder material, 5.50 - 6.50 kg. The water in the clean bucket is slowly added and mixed with a mixer until a homogeneous and lump-free mortar is obtained.

After the material has been rested for 5 minutes, it is applied with stirring once more.

### APPLICATION

• The mortar is applied to the surface with an average uniform thickness.

• While the surface mortar is still wet, it is polished in a circular direction to obtain a grain texture surface with a plastic trowel or in a horizontal or vertical direction to obtain a line texture surface

### PACKING AND STORAGE

25 kg. The moisture is packed in sturdy kraft bags.

Shelf life is at least 6 months when stored in dry and protected environments.

## STYROPLASTER PLASTER FOR EPS

### DESCRIPTION

STYROPLASTER is a fiber reinforced, high tenacity, polymer modified cement based mortar for plastering of extruded or extruded polystyrene heat insulation plates.

### APPLICATION AREA

It is used in the plastering of extruded polystyrenes or expanded polystyrenes - to prevent heat loss in buildings.

### FEATURES

- It is easy to prepare and use.
- Elastic, does not crack or sag.
- Provides good adhesion.
- Fiber reinforcements.
- The study period is long.

### CONSUMPTION

Average of about 1.8 kg / m<sup>2</sup> for 1mm thickness

### APPLICATION

Surface preparation

Care must be taken that the plates to be plastered are firm and well seated. It can be primed with PRIMER AC to increase surface adhesion before plaster application.



Mixing

25 kg. Powder is slowly added material add 6 kg water, in the clean bucket and mixed with a mixer until a homogeneous and lump-free mortar is obtained.

After the material has been rested for 5 minutes, it is applied with stirring once more.

### APPLICATION

• Mortar is applied on average 1 mm thick board.

• The file is placed on the wet plaster complex.

• The second coat of plaster is applied on the dried plaster first coat layer.

• The surface of the plaster is lightly moistened and polished with a steel trowel for a shiny and smooth surface, wiped with a wet sponge for a slightly rough surface.

### PACKING AND STORAGE

25 kg. Damp proof kraft bags. Shelf life is at least 6 months when stored in dry and protected environments.



# Self Levelling Smoothing Mortar

## LEVELTOP 10 SELF LEVELLING SMOOTHING COMPOUND

### DESCRIPTION

LEVELTOP 10 is a cement based single component self-leveling polymer modified usage ready-to-use leveling mortar. It is used on the surface of uneven concrete surfaces, before the coating of ceramics, parquet, PVC etc. before laying the surfaces. PRIMER AC must be applied to the surface before application.

### APPLICATION AREA

It is used as leveling screed in schools and hospitals, military buildings, shopping centers, showrooms and stores, residential buildings, hotels and offices, repairing rough concrete surfaces.

### SPECIAL FEATURES

- It is easy to prepare and apply.
- Fluid consistency.
- Single component. It is mixed with water only.
- It does not crack or shrink.

### CONSUMPTION

LEVELTOP 10, 1.5 -1.8 kg of material creates a coating of 1 m<sup>2</sup> thickness in 1 m<sup>2</sup> area. PRIMER AC 50-100 gr/m<sup>2</sup>.



### APPLICATION

Preparation of the surface;  
Before application of LEVELTOP 10, the application surface should be free of adherence reducing substances such as dust, dirt and oil and should be slightly rough. The playing parts on the surface should be cleaned. The spill area should be pre-partitioned. Primer AC application is absolutely essential on the surface before application, in order to prevent absorption, workability, adherence and formation of air bubbles.

### Mixing

LEVELTOP 10 is a single component.

It is recommended to use a drill and mixer tip to ensure a homogenous mix. First add 5 liters of water to a bucket, then add the powder component slowly and continue mixing until a homogenous mixture is obtained. The amount of mixing water can be changed by  $\pm 0.250$  kg depending on ambient temperature.

### Application

LEVELTOP 10 mixture should be poured on dry concrete surface and spread properly with rubber broom or trowel at desired thickness. Surface air bubbles and corrections must be made with a spiked roller. The air temperature must be at least +5 °C at the time of application and after application. Precautions should be taken in extremely hot and windy weather. After application, all properties of the material are obtained within 24 hours according to the appropriate climatic conditions and material thickness.

### PACKING AND STORAGE

LEVELTOP 10 is a 25 kg bag that is resistant to moisture. Shelf life is minimum 6 months when stored in protected and dry places.

# Adhesive Mortars

## CERACEM CERAMIC TILE ADHESIVE MORTAR

### DESCRIPTION

CERACEM is cement – polymer ceramic tile adhesive compound in powder form, which requires only addition of clean water. The product spread easily on floor and wall surfaces.

### APPLICATION AREA

CERACEM is a ready mixed adhesive to all internal floor and walls in dry or intermittently wet locations. E.g. Domestic showers, kitchens, rooms, bathrooms.

### ADVANTAGES

- no primer requiring
- easy to apply
- has long open time
- excellent slump resistance



### PACKING AND STORAGE

CERACEM packed in bags of 25 kg. If stored in covered in dry premises on pallets, has a shelf life of almost 6 months.

### APPLICATION

#### Surface

The subgrade to be treated must be clean and free from dust, oil, paint, loose materials and any contaminant which may prevent adhesion.

#### Mixing and application

Slowly add 7-8 liters clean water per 25 kg bag and mix. Wait 3-5 minutes and mix again. CERAFLEX is a ready mixed adhesive to all internal floor and walls in dry or intermittently wet locations. Clean and wet the surface spread the adhesive by trowel on the surface with max. 3mm thickness and finally fix the tile on its place.

### QUANTITIES REQUIRED

Esq. of tile needs 3-4 kg adhesive depending on surface flatness, kind of ceramic or application instruments.

## STYROBOND ADHESIVE MORTAR FOR EPS

### DESCRIPTION

STYROBOND is cement – polymer polystyrene thermal insulating board adhesive compound in powder form, which requires only addition of clean water. The product spread easily on wall surfaces.

### APPLICATION AREA

STYROBOND; interior and exterior rigid polystyrene (extruded PS), polyurethane, phenol, glass wool and stone wool insulation slab of cement used to adhere to all vertical surfaces and horizontal applications.

### ADVANTAGES

- The powder mixture STYROBOND ready to use.
- It provides excellent adhesion and flexibility.
- STYROBOND are easily handled.
- Polystyrene valve provides a very good adhesion.
- Used in all interior and exterior applications.
- Provides long-lasting and durable system.
- Resistant to water and frost.
- No cracks between the boards with surface adhesion.



### PACKAGING AND STORAGE

STYROBOND automatic filling is packed with 25 kg of polyethylene backed paper sacks. It stored in a sheltered, dry place for at least 6 months.

### APPLICATION

#### Surface preparation;

STYROBOND applied substrate before any dust, dirt, oil and so on. To prevent adhesion should be free from loose parts. The application surfaces and surfaces to be bonded must be dry.

#### Preparation of the mixture;

To achieve the right mixture of 6-7 L of water to 25 kg STYROBOND must become homogeneous by adding a trowel or mixer should be provided. 5 minutes resting mixture is mixed again.

#### Application;

The flat side of the trowel and combed with a fine layer STYROBOND selected based on the size of the plate to be bonded by applying a notched trowel and gently pressed and bonded to the surface of the plate. After 24 hours, plates are bolted. Plates are coated with fiberglass and plaster after 48 hours. Immediately after application on the instruments used are cleaned with water.

### CONSUMPTION

Esq. of board needs 3-4 kg adhesive depending on surface flatness, kind of board or application instruments.



# BLOCKBOND

## ADHESIVE MORTAR FOR GAS BETON

### DESCRIPTION

BLOCKBOND is a ready-to-use for use in adhesive gasbeton, easy to prepare and applied without shrinkage. The structure includes hydraulic binder (cement), adhesion promoter polymer admixtures and classified fillers.

### APPLICATION AREA

BLOCKBOND; Internal and external facade should be used in the process of knitting of gasbeton and all other building elements.

### ADVANTAGES

- BLOCKBOND is a ready-to-use powder blend.
- Provides high adherence and flexibility.
- BLOCKBOND is easy to handle. Adhesion is high.
- Used for all interior and exterior applications.
- Ensures that the system is long-lasting and durable.



### PACKING AND STORAGE

BLOCKBOND packed in bags of 25 kg. If stored in covered in dry premises on pallets, has a shelf life of almost 6 months.

### APPLICATION

Preparation of mixture;

In order to obtain an accurate mixture, 25 kg of BLOCKBOND in 6 lt water should be added homogeneously mixed with the trowel or mixer. After 5 minutes rest, the mixture is mixed again. Care should be taken not to leave agglomerated material in the mixture.

Application; Mortar is applied on gasbeton and combed. And placed on the gasbeton block, glued and knocked.

Cleaning of tools; Tools used are cleaned with water immediately after application.

### QUANTITIES REQUIRED

BLOCKBOND depends on application tools for the state of consumption surface. 1 bag BLOCKBOND gasbeton adhesive with 1,8 square meters of gasbeton.

## Grouts for tiles

# CEMGROUT

## CERAMIC TILE GROUT

### DESCRIPTION

CEMGROUT is a cement based, non-shrinking, high strength, water impermeable, ready-to-use mixture used to fill ceramic, tile, glass mosaic, marble granite, natural stone and brick joints. Standard colors are gray and white. Color can also be prepared if desired.

### APPLICATION AREA

CEMGROUT; It is used to fill joints of ceramic, tile, tile, granite and marble materials in indoor and outdoor, all vertical and horizontal applications and wet spaces.

### FEATURES

- CEMGROUT is a ready-to-use powder mixture.
  - CEMGROUT is easy to process.
  - CEMGROUT is used in joints up to 6 mm.
- Smooth surface is obtained in all horizontal and vertical applications.
- Water impermeable.



### PACKING AND STORAGE

CEMGROUT 20 Kg of polyethylene-backed kraft bags are packed with automatic filling. It is stored in sheltered and dry places for 6 months.

### APPLICATION

Before application of CEMGROUT, the surface of the application should be covered with all kind of dust, It should be free from loose parts which will prevent adhesion. The ceramic adhesive parts should be cleaned on the surface to be applied. The ceramic adhesive must be completely dried. To obtain an accurate mixture, approximately 6-7 liters of water should be added to 20 kg of CEMGROUT with homogenous mixing with the trowel or mixer. After 5 minutes rest, the mixture is mixed again. CEMGROUT rubber spreads over the ceramics with a spatula to fill the joints. The material is cleaned up with a damp sponge until it is expected to withstand finger pressure. The next day the surface of ceramic and tiles can be polished with dry cloth.

### CONSUMPTION

CEMGROUT consumption depends on the condition of the ceramic surface, the size of the ceramic, the joint width and the joint depth.

## General Purpose Adhesives

# FLOORBOND PVC

## ACRYLIC BASED PVC MARLEY ADHESIVE

### DESCRIPTION

FLOORBOND PVC is an acrylic resin based general purpose pvc, carpet and linoleum adhesive containing water-based adhesion promoter filler and additives.

### APPLICATION AREA

PVC, jute carpet and linoleum flooring.

### FEATURES

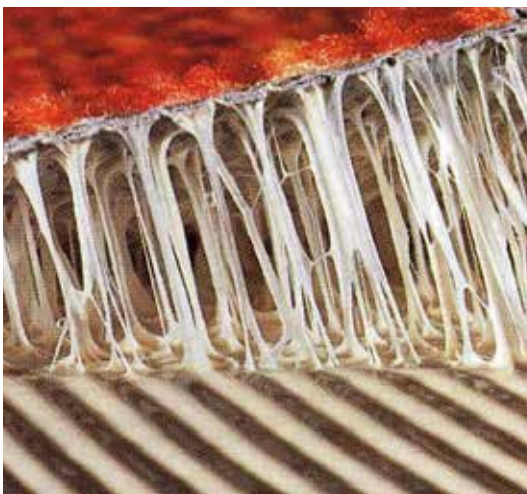
- It has high adhesive property.
- Application is easy and fast.
- There is a long working life.
- There is no harmful effect to the environment.
- Suitable for underfloor heating systems.
- It is not flammable.
- Provides economic use.

### PACKING

FLOORBOND PVC is packed in 20 kg plastic buckets. The shelf life of the unopened package is 6 months.

### CONSUMPTION

FLOORBOND PVC is 250 - 500 g / m<sup>2</sup> depending on the surface smoothness and the toothed comb dimensions used.



### APPLICATION

A- Surface preparation; The floor should be flat, dry crack free. Dust, dirt, oil, etc., which will prevent surface adhesion. Should be cleared from the factors. To obtain smooth surfaces FLOORBOND PVC material should be used according to its technical specifications.

B- Application tools; A1, A2 and B1 can be applied with threaded trowel tips. Tools can be made with water immediately after cleaning.

C- Application; Before use FLOORBOND PVC should be mixed well in its own packaging. The slip layer to be formed on the top of the package should be discarded during the long waiting period. It should be spread homogeneously with the toothed trowel in accordance with the characteristic of the ground to be applied. After 10 to 15 minutes the floor can be glued onto the glue spread on the floor. Welding can be done only 24 hours after the application time. It must be turned off during the coating, which must be operated 10 days before application in the underfloor heating systems. Heating can be restarted 72 hours after application.

### TECHNICAL SPECIFICATIONS

Color: White

Consumption: 250 - 500 g / m<sup>2</sup>

Resistance to mechanical effects: after 24 hours

Final drying: 72 hours later

Hazard class: Not flammable

Storage: between +0 ° C and +30 ° C

## CEMCARPET

### CARPET TILE ADHESIVE

#### DESCRIPTION

CEMCARPET is a water based acrylic dispersion based, one component adhesive that does not lose its adhesion property over time and is also used for easy removal and reattaching of tile pvc bitumen and foam based tile floorings in the future.

#### APPLICATION AREA

It is used for bonding PVC, wool, foam and felt back tile floors.

#### PACKING

CEMCARPET 10 LT is packed in plastic drums.

#### CONSUMPTION

CEMCARPET is 50 - 150 g / m<sup>2</sup> according to the surface smoothness used.



#### APPLICATION

The floor should be flat, dry and without cracks. Dust, dirt, oil, etc., which will prevent surface adhesion. Should be cleared from the factors. CEMCARPET should be applied to the surface by roller.

#### TECHNICAL SPECIFICATIONS

Color: White (transparent after drying)

Consumption: 50-150 g / m<sup>2</sup>

Hazard class: Not flammable

Storage: 12 months

## Grout Mortars

## GROCEM

### GROUT MORTAR

#### DESCRIPTION

GROCEM is a cement based, non-shrinking, high strength, water impermeable, ready-to-use mixture that is easily prepared and applied.

#### APPLICATION AREA

- Machine bases and base plates
- Fixed to the floor of the machine
- On basic sockets
- Installation of prefabricated building elements
- Fixed to the floor of steel columns
- In places where high strength is needed, filling

#### FEATURES

- GROCEM is a ready-to-use powder mixture.
- GROCEM is easy to process.
- GROCEM does not shrink.
- High flowability.
- Water impermeable.



#### PACKING AND STORAGE

GROCEM is packed with 25 Kg of polyethylene-backed kraft bags with automatic filling. It is stored in sheltered and dry places for 6 months.

#### APPLICATION

Before application of GROCEM, the surface of application should be covered with all kinds of dust. It should be free from loose parts which will prevent adhesion. The surfaces of steel elements should be cleaned to prevent adhesion.

In order to obtain an accurate mixture, 25 kg of GROCEM should be added slowly into the bucket containing about 4 liters of water in accordance with the desired casting consistency and mixed homogeneously with the mixer. After 5 minutes rest, the mixture is mixed again. GROCEM precision should not be confused by hand.

Prepared mixture should be carefully transferred into prepared mold preparation. In order to avoid air bubbles under the plate, a steel pipe must ensure that the inflatable mortar is placed without voids.

#### CONSUMPTION

GROCEM consumption depends on the width, depth and height of the mold. The density of waste is 2,10-2,20 kg / L.

## Quartz Sand

0-300 micron

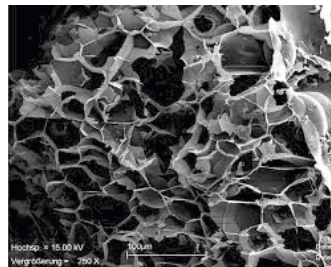
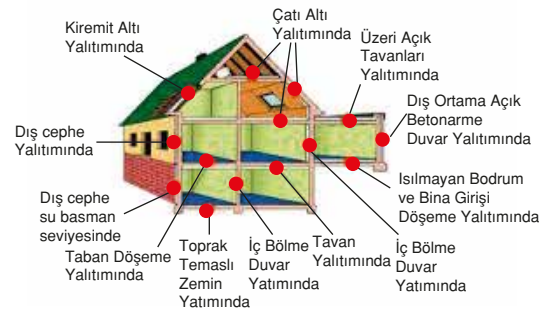


200-500 micron

# Cemix®

## construction chemicals

### EKOLOJİK ISI YALITIMI





**YÜZEY SERTLEŞTİRİCİLER**  
**SURFACE HARDENER**

**BASKI BETON SİSTEMLERİ**  
**SURFACE HARDENER FOR STAMP**

**BETON YÜZEY KORUMA SIVILARI**  
**CONCRETE PROTECTIVE LIQUIDS**

**YÜZEY HAZIRLAMA ASTARLARI**  
**PRIMERS FOR SURFACE PREPARATION**

**SU YALITIM SİSTEMLERİ**  
**WATERPROOFING SYSTEMS**

**TAMİR HARÇLARI**  
**REPAIR MORTAR**

**HAZIR SIVALAR**  
**READY PLASTERS**

**DEKORATİF SIVALAR**  
**DECORATIVE PLASTERS**

**ZEMİN DÜZELTME HARÇLARI**  
**SELF LEVELLING SMOOTHING MORTAR**

**YAPIŞTIRMA HARÇLARI**  
**ADHESIVE MORTARS**

**DERZ DOLGULARI**  
**TILE GROUTS**

**PVC ZEMİN TUTKALLARI**  
**ADHESIVES FOR PVC FLOOR MATERIALS**

**GROUT HARÇLAR**  
**GROUT MORTARS**

**SÖVE KUMU**  
**QUARZ SAND FOR EPS COATING**

**Cemix®**  
**construction chemicals**

**ARSLAN YAPI KİMYASALLARI**  
**END. MAK. İNŞ. SAN. TİC. LTD. ŞTİ.**

Adana Hacı Sabancı Organize Sanayi Bölgesi  
Hilal Caddesi No 1 SARIÇAM / ADANA

TEL: +90 322 346 61 87

FAX: +90 322 346 61 88

[bilgi@cemix.com.tr](mailto:bilgi@cemix.com.tr)

[arslanyapikimyasallari@gmail.com](mailto:arslanyapikimyasallari@gmail.com)